

Project title / **Semmering stars**

Final submission / 2021.08.20

Team / **Global Family**

Members / LIAN Haichao, ZHAO Qiyun, KONÉ Youma-Mariam

University / Kyushu University, Fukuoka, Japan

1. CONCEPT EXPLANATION & SITE ANALYSIS

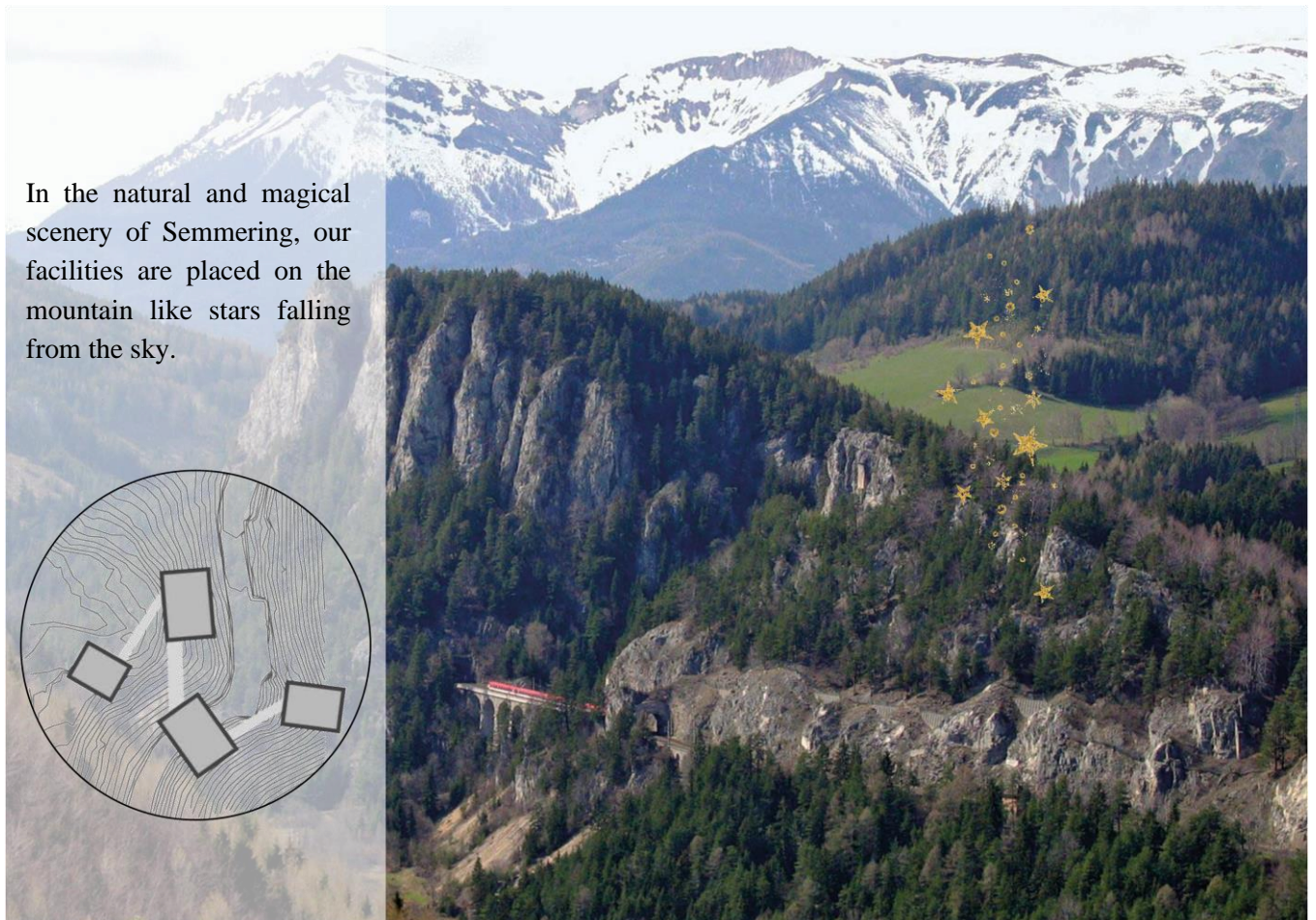


Fig.1. Concept illustration

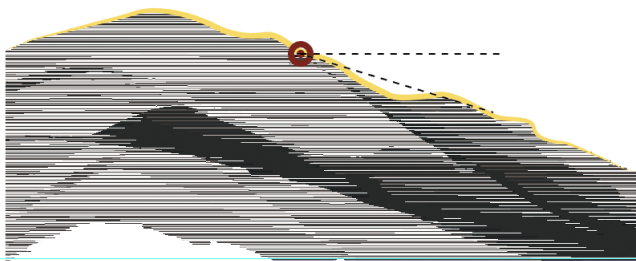


Fig.2. Topography of the chosen site

SWOT analysis of the chosen site

Strength: Multiple landscape lines

Weakness: Narrow road on the site

Opportunity: More visitors among locals

Threat: Coordination of the project with nature

2. THE SITE PLAN



Fig.3. General layout plan

3. FLOOR PLANS & SECTIONS

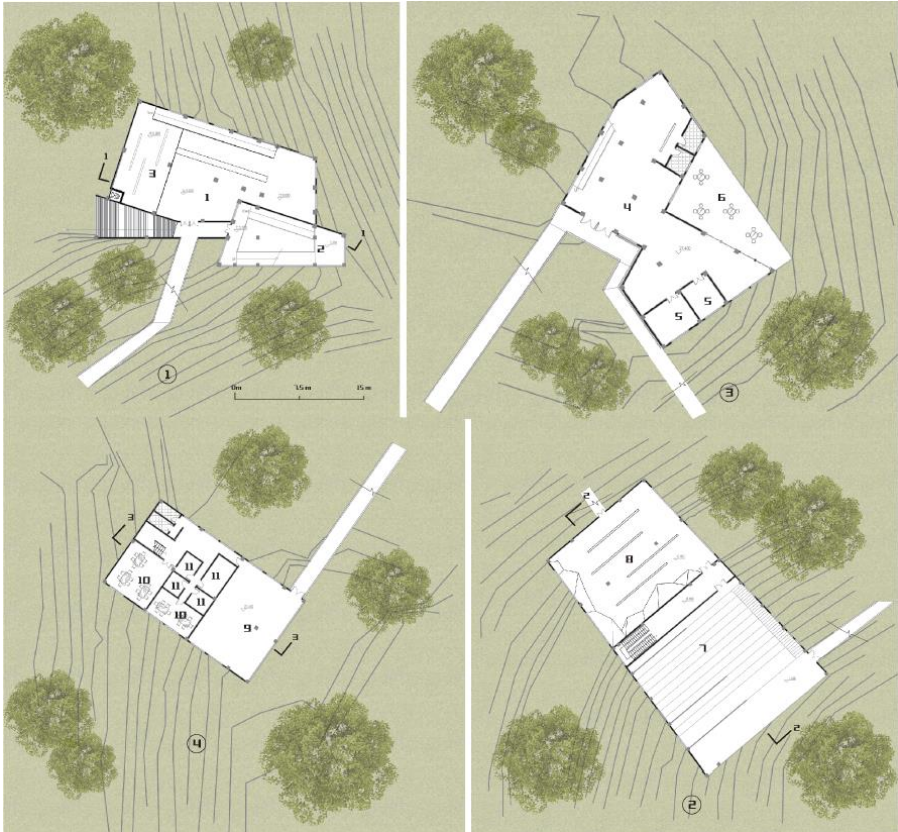


Fig.4. Plans

- 1- Lobby
- 2- Viewing Trail
- 3- Exhibition Hall 1
- 4- Restaurant
- 5- Kitchen
- 6- Outdoor Dining Area
- 7- Viewing Theatre
- 8- Exhibition Hall 2
- 9- Souvenir Shop
- 10- Office
- 11- Conference room

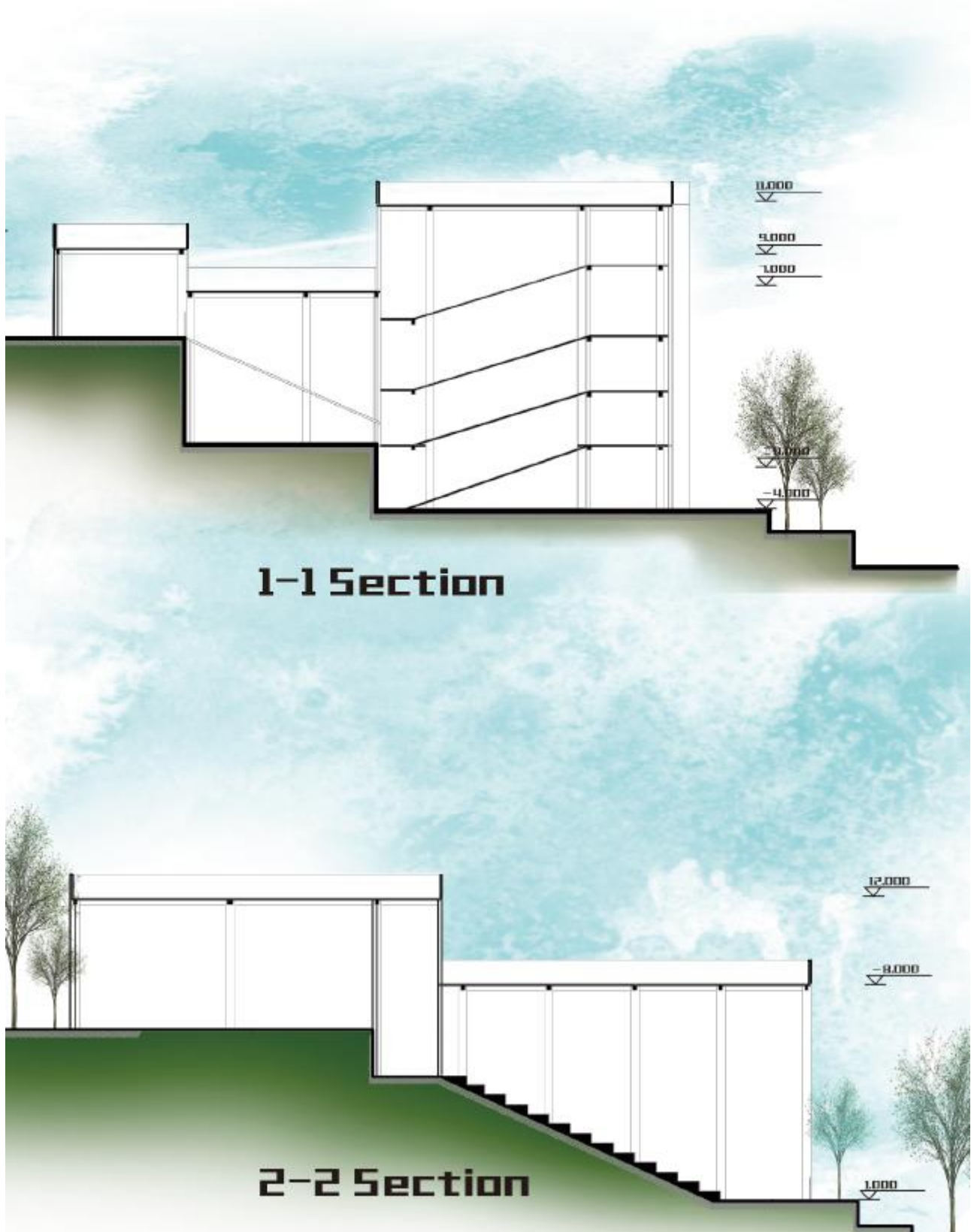


Fig.5. Sections

4. THREE DIMENSIONAL VISUALIZATIONS

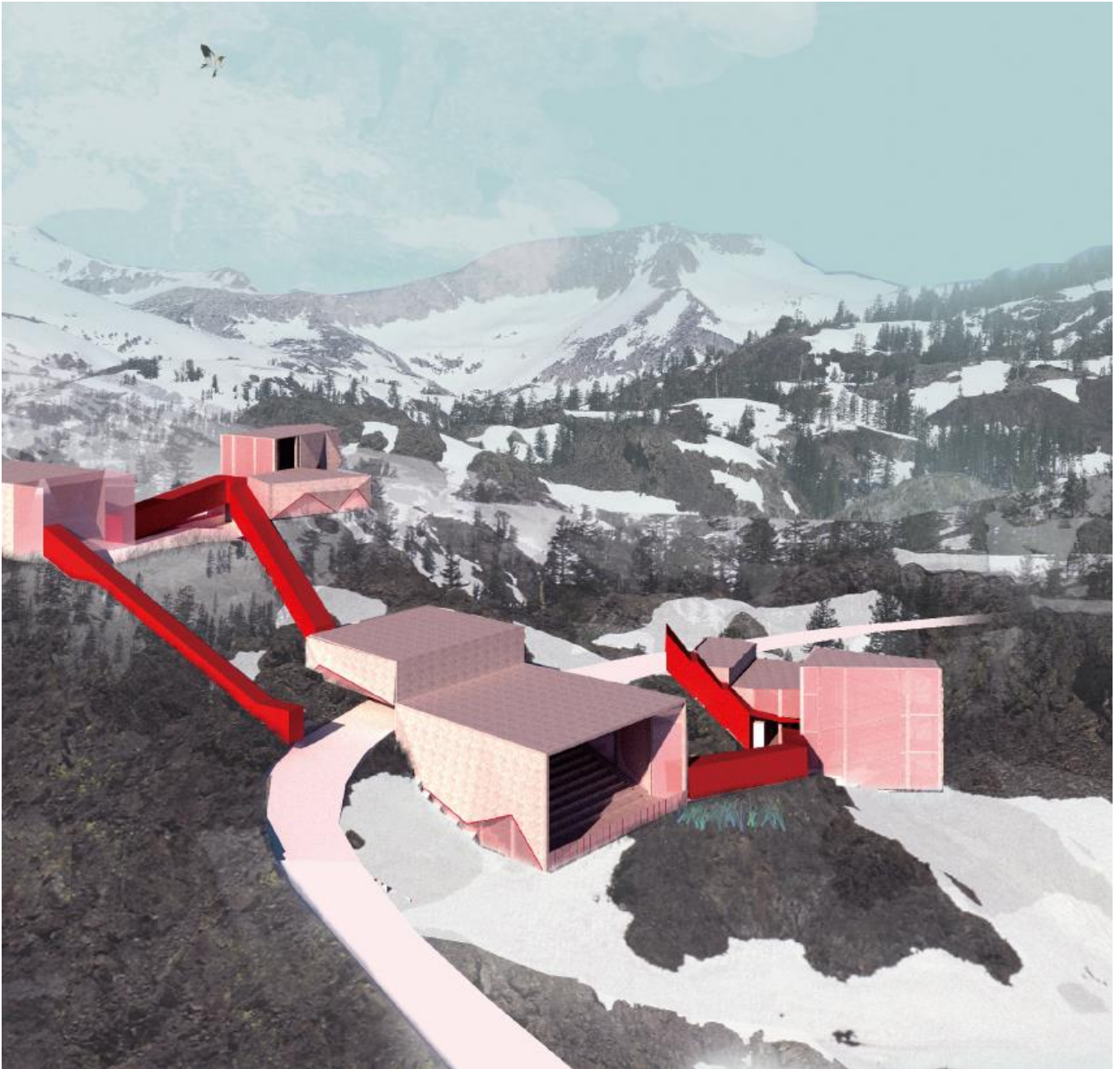


Fig.6. Render of the facilities

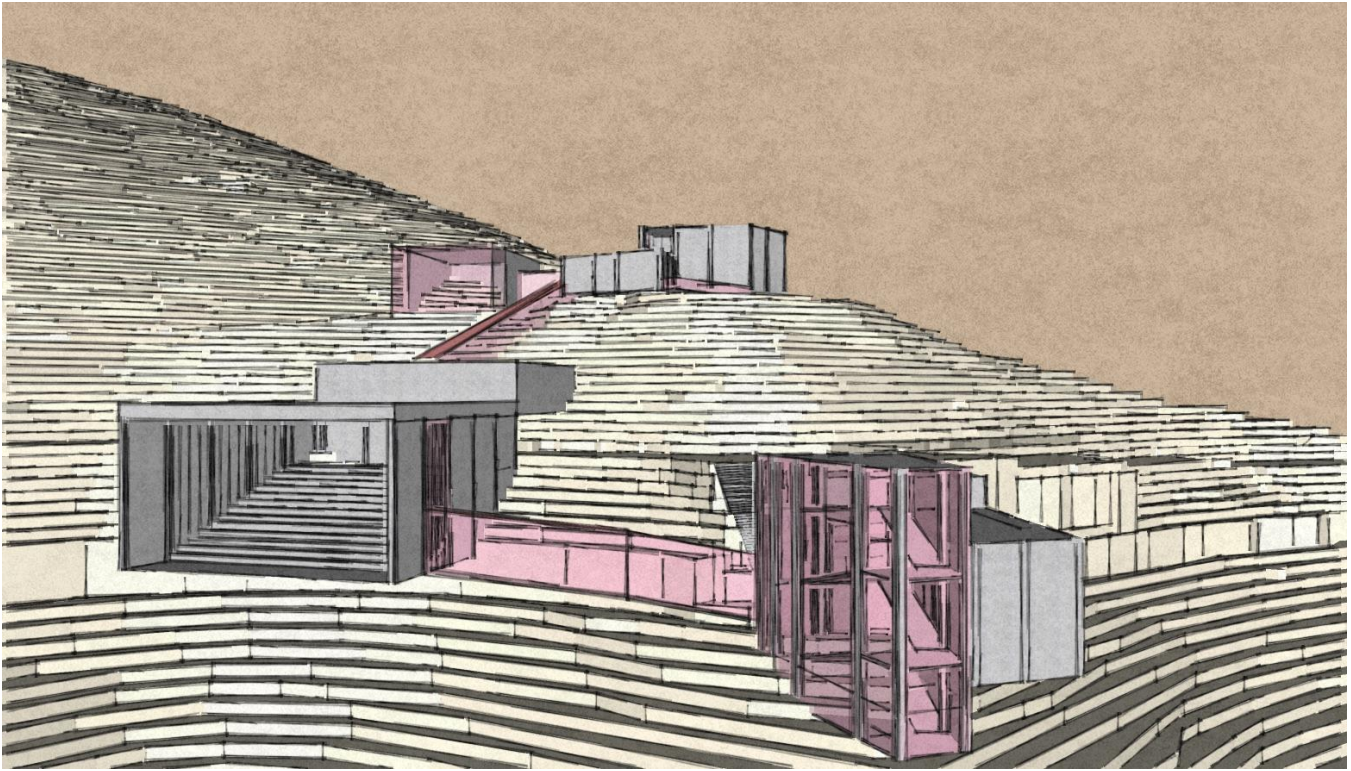


Fig.7. Sketch A

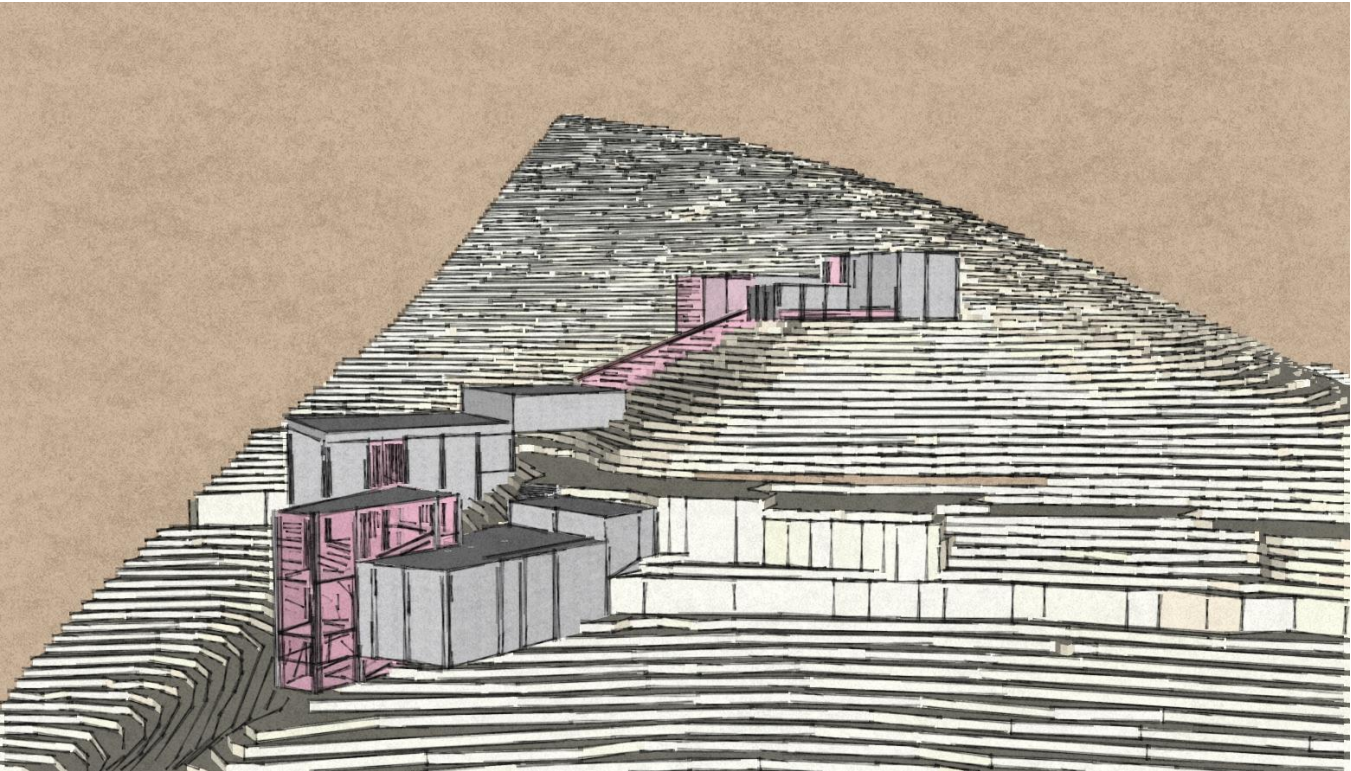


Fig.8. Sketch B

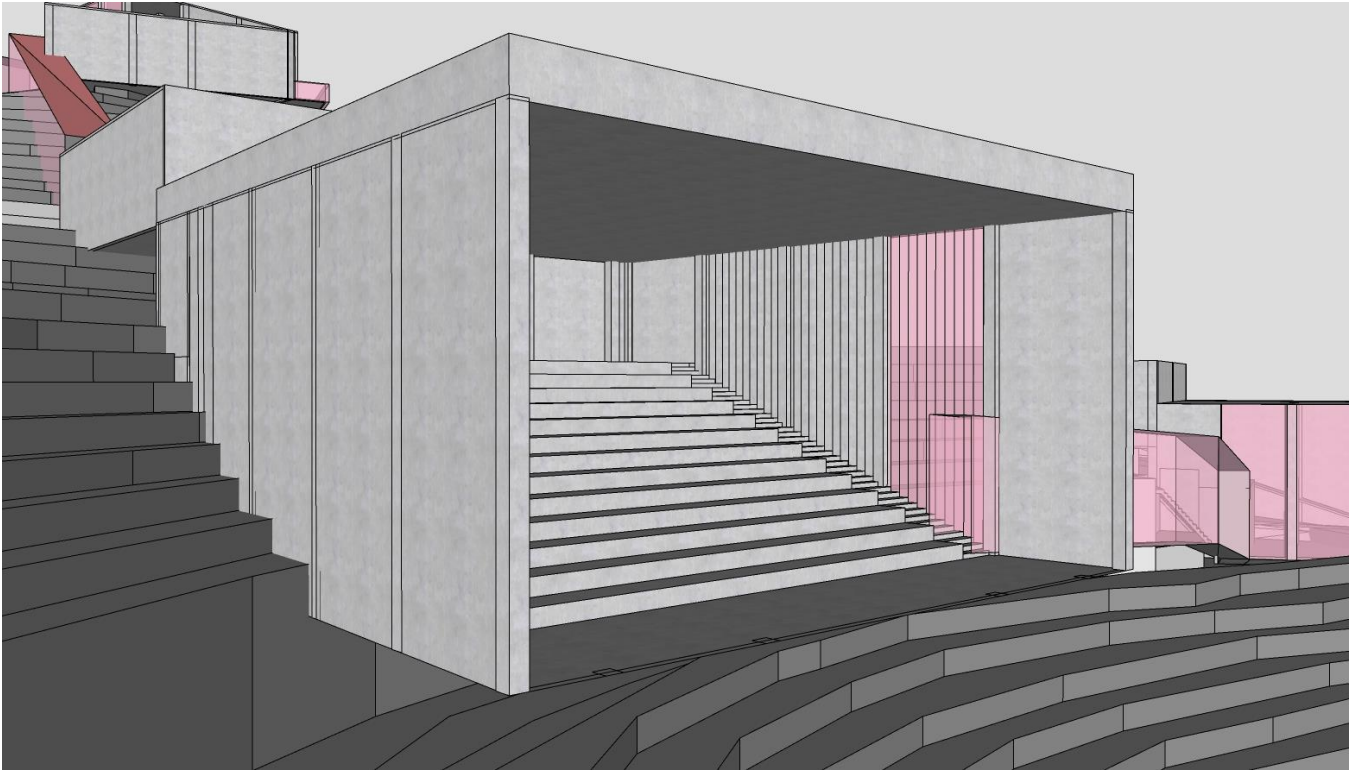


Fig.9. Viewing Theatre

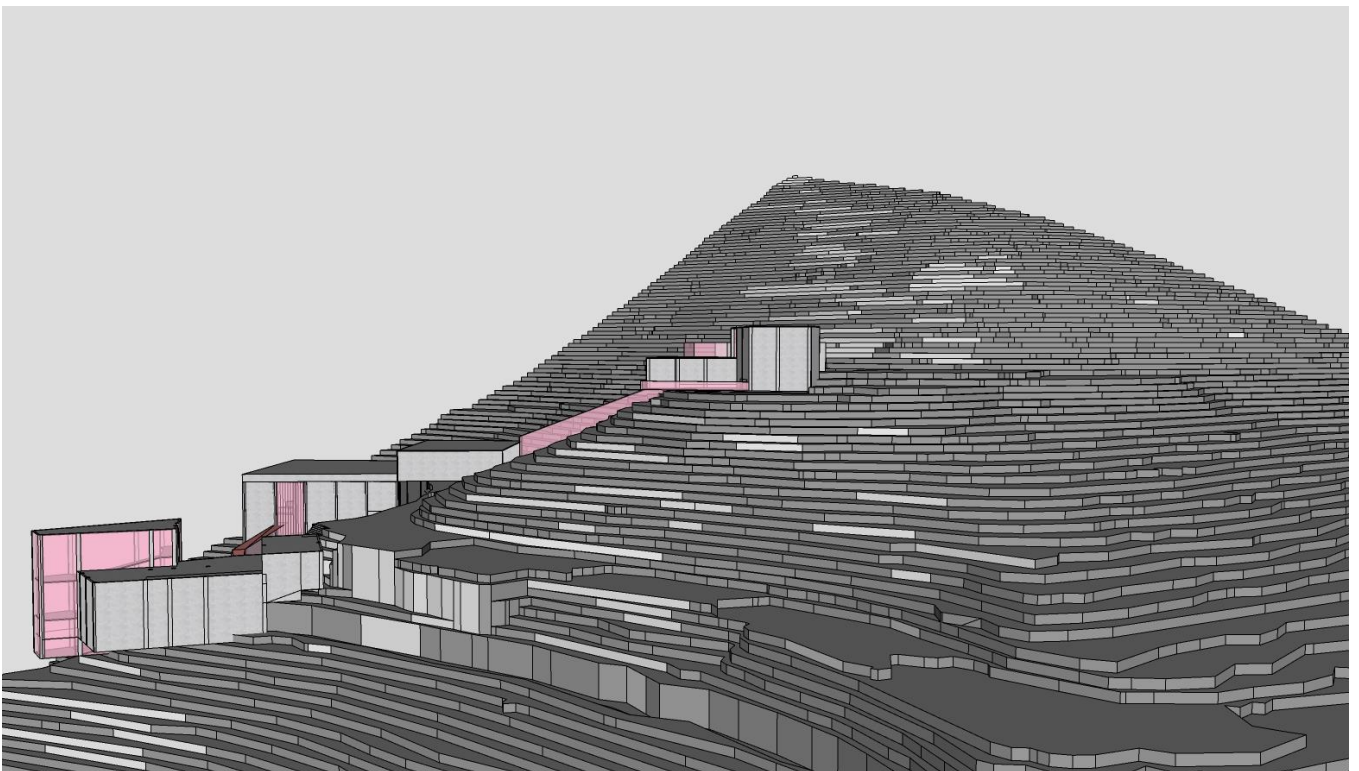


Fig.10. Side view

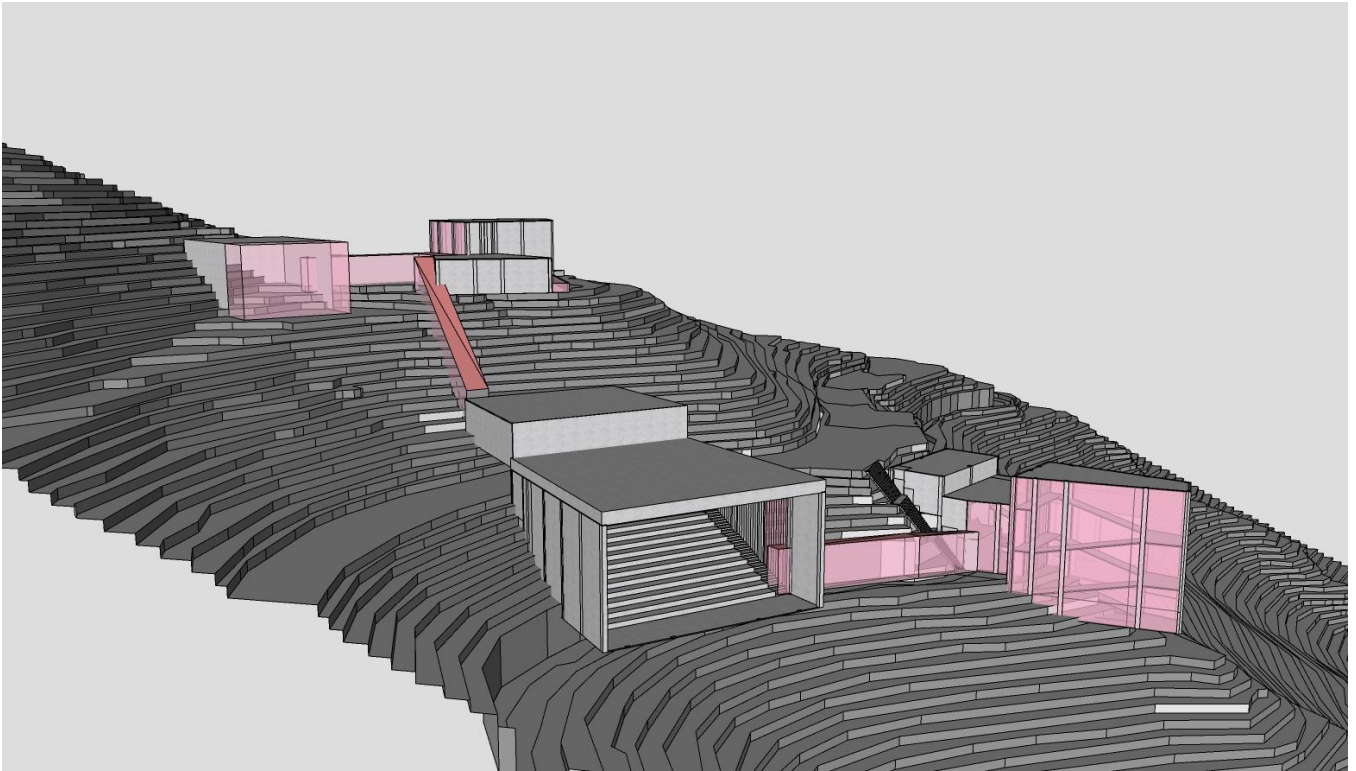


Fig.11. Overall view model

5. TEXTUAL EXPLANATION OF THE CONTEXT AND THE DESIGN

Geography and climate

Semmering is located in the southwestern part of Lower Austria, only an hour's drive from the capital Vienna. The Alps, the most important mountain range in central Europe, spans Europe from east to west. It has become a natural boundary between the climate zone controlled by the westerly belt in the north and the Mediterranean climate formed by the seasonal swing of atmospheric circulation in the south. Semmering is located in the east of this mountain range facing the entrance of the plain. Due to the combination of water vapor from the northwest and southwest and the higher altitude, there is greater humidity, more rainfall, and cooler summers than Vienna. Although it is not far from Vienna, the steep Alps makes this place significantly different from the dry Vienna, and it is a good place for people who enjoy cooler and wetter.

For Semmering itself, the west, east, and south are surrounded by mountains. Towards the west, you can even easily see snowy mountains. On the east side, relatively low mountains surround it. enjoying the sunrise is a good choice in Semmering. On the south side of Semmering, there is a southwest-trending river valley. It is because of the wind from the southwest that it continuously sends water vapor over, while the south-to-north hills on the east side lead the water vapor to the Semmering, and the more towering peaks on the north side intercept the water vapor. It is this small terrain that creates more precipitation than not far from Vienna.

Under such climatic conditions, Semmering has very lush vegetation dominated by evergreen coniferous forests, and deciduous broad-leaved forests at lower elevations. In addition, the alpine meadows are alternately interspersed with coniferous forests, and the scenery is very beautiful. The lush forests and changing vegetation have bred a variety of characteristic wild animals. To protect the environment and landscape here, this place was involved into Natura 2000, a network of nature protection areas in the territory of the European Union.

Semmering has varying scene in different seasons. In spring and summer, the fresh air and the cool weather attract the visitor. In winter, ski could be a good choice in Semmering.



Fig.12. Semmering changing scenery throughout seasons

There are mountains and rivers which make nice landscapes. There are many beautiful ancient buildings with many characteristics, especially the Semmering railway built from 1848 to 1854. In 1998, due to the superb design of this railway, its great significance to the history of railway construction, and the beautiful scenery, this railway was listed as a World Heritage Site by UNESCO. It is said that there are still steam locomotives in the normal life, as they did 100 years ago, in order to give people the historical significance of this route.



Fig.13. Semmering railway, one of the greatest feats of civil engineering during the pioneering phase of railway building.

In addition, there are castles, churches, various historical buildings, and many buildings are still used as hotels for tourists to experience. Silbererschlossl, a castle standing above the road called Hochstrasse. The castle has a long history and a wonderful view which can see the site from north to south. Pius-Saal, a church located in the west side on Hochstrasse. Südbahnhotel Semmering, one of the historical buildings is still used as hotel, colored the scene of Semmering.



Fig.14. Silbererschlossl (castle)



Fig.15. Pius-Saal (church)



Fig.16. Südbahnhotel Semmering

There is a golf park located in the north and a ski ground located in the south. These two places with the beautiful scene and cultural buildings becoming the reason people travel here. It is said that there are over 10 thousand tourists visit Semmering.



Fig.17. Ski ground

The building character of Semmering

Because Semmering is located in the mountains and forests, the local people make full use of the local stone and wood to build houses. Usually there are more than one-story buildings, and the main wall of the building is stone, mainly in light tones such as pale orange similar to stone, with symmetrical centers and distinct primary and secondary. The roof is dominated by dark green and other forest-like tones. The roof is high and there is a roofed attic. On the whole, the color of the building is similar to that of Semmering, and it is integrated with the local natural landscape and is completely natural.

Trouble and chance of Semmering

Semmering is a place with a wonderful view, but it is not the benefit with development now, at least before the pandemic. The people here is decreasing, which causing lose of tax base. The new high way bypasses Semmering, exacerbated population exodus and there are only 518 people live in Semmering until 2020. The pandemic makes people think it again, that is wither live in a big city or in a country like Semmering is better. Bid city has many convince though, small town has fresh air and water, beautiful environment, good neighbor relationship. And nowadays, with the development of internet and transport, people can work and get goods online, it seems not necessary to live in big city. It is time to attract people back here and revival Semmering.

The choosing of place of our design

Our design site is the hillside on both sides of Hochstrasse. This hillside is an east slope on the edge of the Greater Shandong Mountains after turning north. The mountain is steep and the trees are lush. The road runs roughly along the contour line from north to south. The buildings are located close to the roadside. Only a few buildings are built on the upper side of the hillside or distributed along the mountain road below. So we decided that we should choose our design place on road Hochstrasse to fit the tradition. Also, under the situation of population decreasing, compact is an important idea, make new design near the road is economical economic.

There are lots of good view pots in Semmering. To make a good use of the sites, we connected each spot making visual corridors, tried to find a place have a good view and could become a good view. We found 12 points of the place can fit the condition above. However, the place is not a flat plain, it is a steep hillside. We cannot simply use straight line connecting the spots, considering about it, we analysis the degree of each point. Finally, place 6 can see the long-range, medium-range and close range, and the area here is flat compared with other sites. And the location here has distance from the existed Tourists Center, the same function buildings could not bother each other.

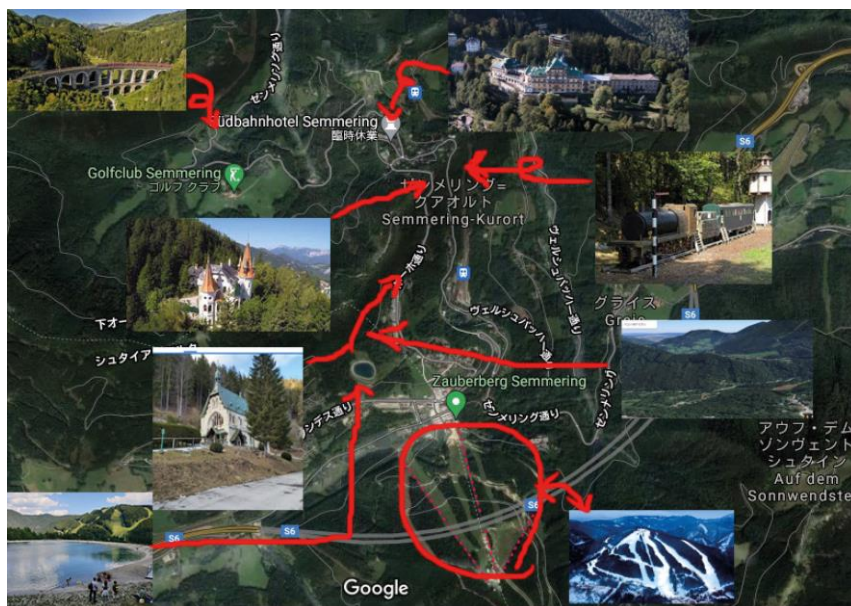


Fig.18. Surrounding landmarks